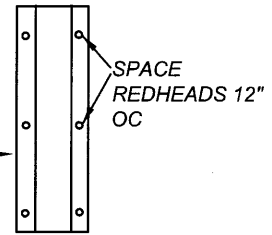


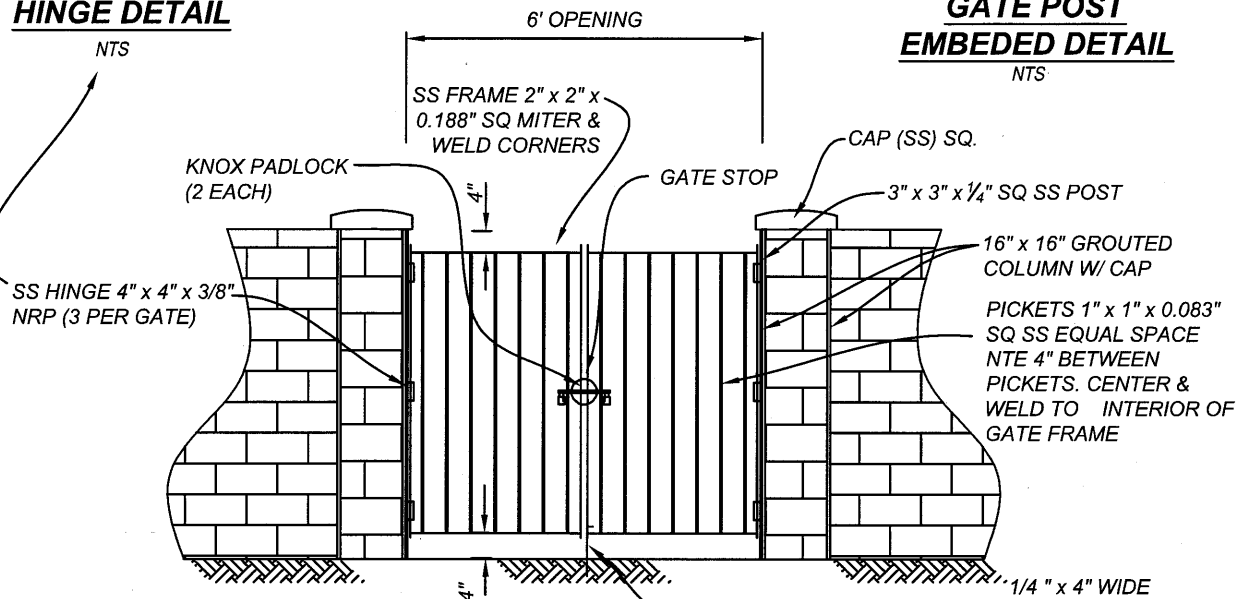
NTS

$\frac{3}{8}$ " x 6" SS FLAT BAR
FASTENED BY $\frac{3}{8}$ " SS
REDHEADS
TACK WELD SS NUT
CONTINUOUS WELD
POST TO BAR

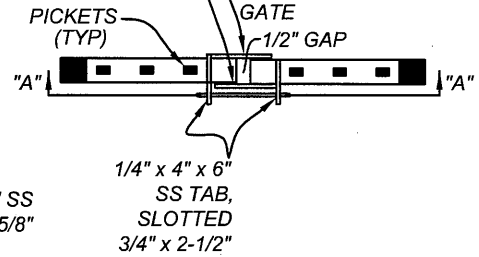


**GATE POST
EMBEDDED DETAIL**

NTS

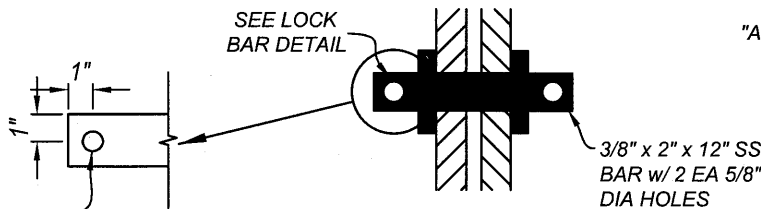


CAN & BOLT
SET IN CONC



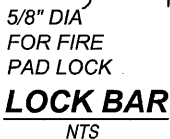
TOP VIEW OF GATE

NTS



**SECTION "A-A"
LOCKING MECHANISM**

NTS



NTS

FIRE ACCESS GATE

NTS

NOTES:

- 1.) ALL METAL IS TO BE STAINLESS STEEL No 304, SAND BLAST FINISH, NATURAL COLOR.
- 2.) COLUMN PER FENCE/WALL PLAN.

NOT TO SCALE



RECOMMENDED:
[Signature] 8/21/18
DIVISION MANAGER DATE

APPROVED:
[Signature] 9/14/18
PUBLIC WORKS DIRECTOR/ DATE
CITY ENGINEER

CITY OF MORENO VALLEY
PUBLIC WORKS DEPARTMENT - LAND DEVELOPMENT DIVISION

FIRE ACCESS GATE

STANDARD PLAN
MVGF-642-0

SHEET 1 OF 1